

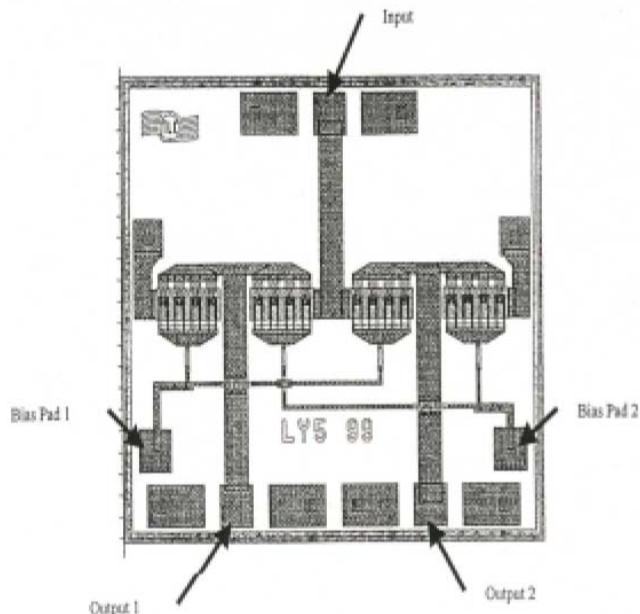


TLC SWY01-03

TLC SPDT Switch Series

Description The TLC SWY01-03 series is a series of general purpose SPDT switches. A 0.25µm PHEMT process was chosen to provide low loss, good isolation of DC to 6 GHz range with low power consumption. The broadband width performance provided by the TLC SWY01-03 makes it an excellent candidate for use in radar or communication systems.

- Features**
- ❑ DC to 6 GHz
 - ❑ Low Insertion < 6 GHz
 - ❑ Power ~ 0.5 Watts
 - ❑ Good Isolation ~ 40 dB



Maximum Ratings

Symbol	Parameter	Rating	Units
VG	Negative Supply Voltage	- 2	V
TC	Operating Temperature	- 50 to 130	° C
TSTG	Storage Temperature	- 65 to -150	° C

Performance Summary

Parameter (@ 25 °C)	Min	Typ	Max	Units
Frequency	DC	2	6	GHz
P _{Out(1dB)} (0.5-3.5 GHz)	22	26	30	dBm
Switching Time	--	< 60	--	Nsec
Insert Loss (DC to 6 GHz)	0.7	1.0	1.1	dB
Return Loss (DC to 4.6)	15	18	22	dB
Rise and Fall	--	35	--	nsec

Operating Conditions

Frequency input levels = 10 dBm
 $V_{gs-trans} = -2 V$ $V_{ds-trans} = 0 V$

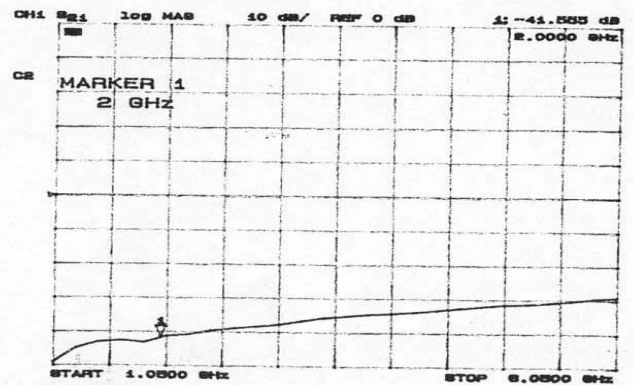
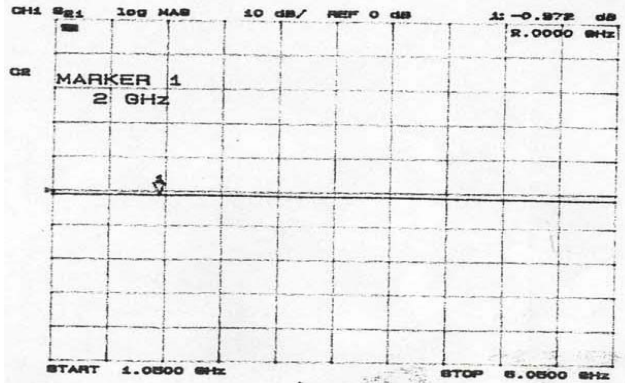
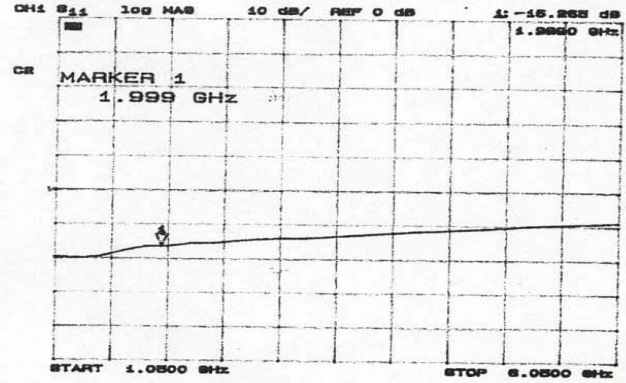
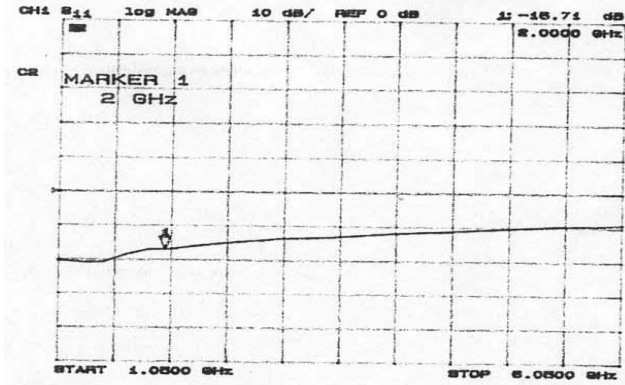
TLC can auto tune chip to maximize performance at customer target frequency and bias.

TLC reserves the right to change performance data and specifications without notice



TLC SWY01-03

TLC SPDT Switch Series



TLC reserves the right to change performance data and specifications without notice